



Client
Quantity
Project
Position

ROC 1100

Model:
R110/100FTE/SLR/P
Cod:
MP01375125024

Technical data

Modularity:
On cabinet with doors
Dimension (mm):
1000x1100x870
Total electric power (kW):
15
Cooking zone dimensions 1 (LxD mm):
734x900
Electric power (V):
380-415
Ampere (A):
11,5
Phases:
3N
Cable section (mmq):
5G1,5
Frequency (Hz):
50-60
Net volume (m3):
0,957
Packing dimensions (mm):
1280x1272x1274
Gross weight (kg):
190
Gross volume (m3):
2,074

Features

Working top:
Realizzato in acciaio inox AISI 304 spessore 2 mm
Material of plate:
Cromo satinato
Knobs:
Made of aluminum with IPX5 water protection
Handles:
The brushed aluminum handles allow for a secure and sturdy grip with a ergonomic lines
Flue:
Made of AISI 304 stainless steel
Heating:

Armoured heating elements
Liquid collection container:
Removable and dishwasher safe
Plate:
Satin chrome plate
Upright Splash guard:
On two sides (optional)

In order to constantly offer the best possible products we reserve the right to make changes on technical specifications without incurring any obligation for equipment previously or subsequently sold.

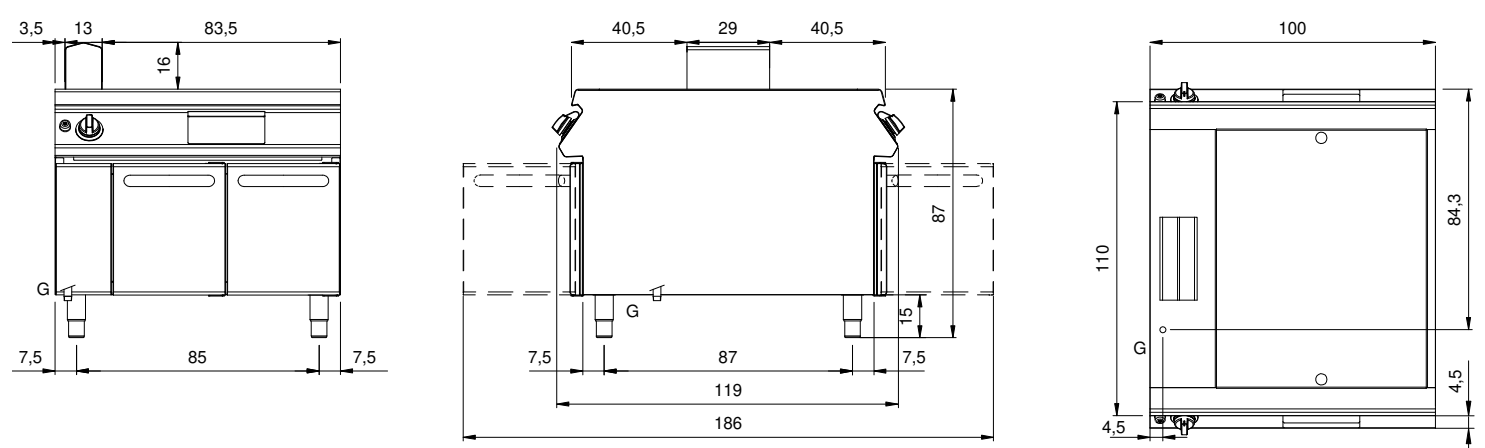
Modular Professional S.r.l. Via Palù, 93 - 31020 - San Vendemiano (TV) - Italy - P.I. 04414900268
modular@modular.it

modular.it -



Electric griddle, 2/3 smooth 1/3 ribbed satin chrome plate, on cabinet with doors

Technical draw



E:
Electric power

In order to constantly offer the best possible products we reserve the right to make changes on technical specifications without incurring any obligation for equipment previously or subsequently sold.

Modular Professional S.r.l. Via Palù, 93 - 31020 - San Vendemiano (TV) - Italy - P.I. 04414900268
modular@modular.it

modular.it -