

Client \_\_\_\_\_ Quantity \_\_\_\_\_

Project \_\_\_\_\_ Position \_\_\_\_\_

## FUN 650

**Model:** F65/40PCGB/T

**Cod:** MP01012112000



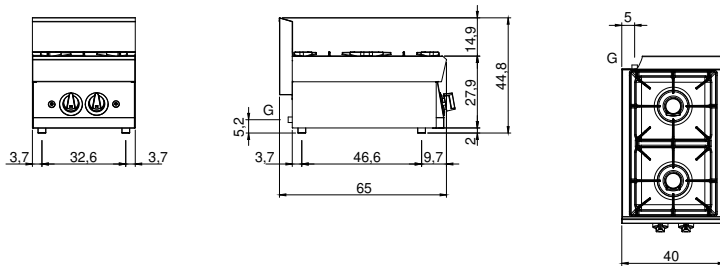
### Technical data

<b>Modularity:</b>	Top
<b>Dimension (mm):</b>	400x650x300
<b>Total gas power (Kcal/h):</b>	7395
<b>Total gas power (kW):</b>	8,6
<b>Gas connection:</b>	1/2"
<b>Net volume (m3):</b>	0,078
<b>Packing dimensions (mm):</b>	477x776x612
<b>Gross weight (kg):</b>	26
<b>Burner power 1 (kW):</b>	5
<b>Burner power 2 (kW):</b>	3,6
<b>Gross volume (m3):</b>	0,227

### Features

<b>Burners:</b>	Piezo ignition available in cast iron with single crown brass burner cap
<b>Grill:</b>	In cast iron with long spokes
<b>Working top:</b>	Made of AISI 304 stainless steel with a thickness of 10/10 mm and removable enamelled containers
<b>Knobs:</b>	Knobs are made from a sturdy heat-resistant polymer blend and are equipped with liquid anti-leakage washer
<b>Kit Gas:</b>	Natural gas conversion kit 30/50 m/bar (tested with natural gas G20)

Piano di cottura gas, 2 fuochi. Piano in acciaio inox AISI 304 spessore 8/10; involucro in acciaio inox AISI 430 spessore 8/10; fondi e parti interne in acciaio AISI 430; rinforzi interni eseguiti in materiale anticorrosione (lamiera alluminata). Piano di cottura dotato di bruciatori rapidi in ghisa/ottone di elevata potenza (1x3,6 kW + 1x5 kW). Bacinelle in acciaio smaltato estraibili per la pulizia. Griglie piano di cottura in ghisa smaltata antiacido. Rubinetti gas valvolati in sicurezza con termocoppia, accensione piezoelettrica dei bruciatori. Potenza totale 8,6 kW.

**Technical draw**

**G:** Gas connection 1/2"