



Client
Quantity
Project
Position

FUN 600

Model:
F60/30PCE/T
Cod:
MP01012121000

Technical data

Modularity:
Top
Dimension (mm):
300x600x300
Total electric power (kW):
4
Electric power (V):
380-415
Ampere (A):
9,5
Phases:
3N
Cable section (mmq):
5G1,5
Frequency (Hz):
50-60
Net volume (m3):
0,054
Packing dimensions (mm):
376x695x596
Gross weight (kg):
16
Gross volume (m3):
0,156

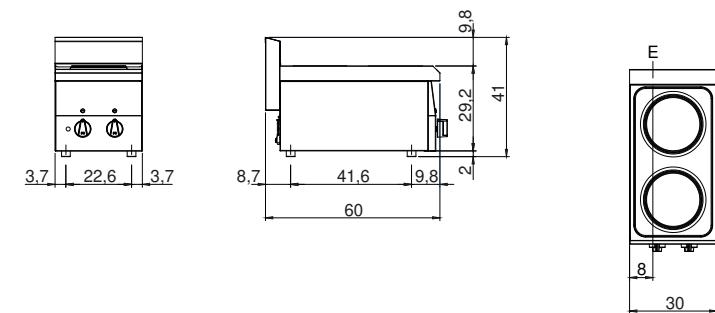
Features

Working top:
Made of AISI 304 stainless steel with a thickness of 8/10 mm
Knobs:
Knobs are made from a sturdy heat-resistant polymer blend
Flue:
Made in a single piece, which facilitates the alignment of the modules

Electric range, 2 round plates, top

Electric hob with 2 plates Top with deep funnel in AISI 304 stainless steel; covering in AISI 430 stainless steel thickness 8/10; bottoms and internal parts in anti-corrosion material (aluminised sheet metal). Hob with cast iron electric plates Ø 180 mm with stainless steel edge sealed to top. Six different temperature adjustments for each plate. Indicator lights to show electrical power supplied and plates in operation. Power: 2 plates x 2 kW ea. Total power 4 kW. Electrical power supply VAC 400+3N 50÷60 Hz.

Technical draw



E:
Electric power

In order to constantly offer the best possible products we reserve the right to make changes on technical specifications without incurring any obligation for equipment previously or subsequently sold.