

Client _____ Quantity _____
 Project _____ Position _____

FUN 700

Model: F70/40PCEQ/T

Cod: MP01012123004



Technical data

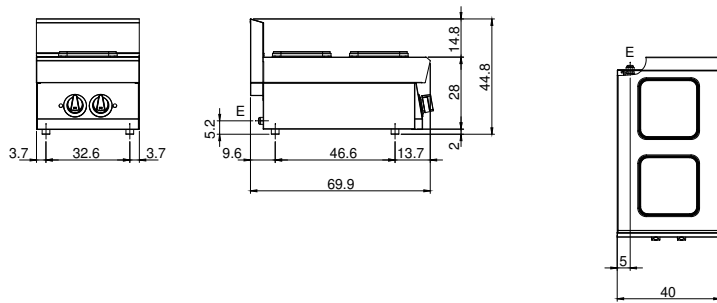
| | |
|----------------------------|-------------|
| Modularity: | Top |
| Dimension (mm): | 400x700x300 |
| Total electric power (kW): | 5,2 |
| Electric power (V): | 380-415 |
| Ampere (A): | 12 |
| Phases: | 3N |
| Cable section (mmq): | 5G1,5 |
| Frequency (Hz): | 50-60 |
| Net volume (m3): | 0,084 |
| Packing dimensions (mm): | 477x776x612 |
| Gross weight (kg): | 32 |
| Gross volume (m3): | 0,227 |

Features

| | |
|--------------|--|
| Working top: | Made of AISI 304 stainless steel with a thickness of 10/10 mm |
| Knobs: | Knobs are made from a sturdy heat-resistant polymer blend and are equipped with liquid anti-leakage washer |

Electric hob 2 plates. Top made of AISI 304 stainless steel thickness 8/10; covering in AISI 304 stainless steel thickness 8/10; bottoms and internal parts in AISI 430 steel; internal reinforcements made of anti-corrosion material (aluminised sheet metal). Hob equipped with cast iron electric plates with stainless steel edge sealed to top. Each plate is controlled by a switch with 6 possible temperature adjustments and is equipped with indicator lights to show that electrical power is being provided and that the plates are working. Model with square plates 220x220 mm. - 2 plates x 2.6 kW. Total power 5.2 kW Electrical power supply VAC 400 + 3N 50±60 Hz. Can be set up on bridge system, or on neutral base with optional doors

Technical draw



E: Electric power