



Client \_\_\_\_\_ Quantity \_\_\_\_\_  
Project \_\_\_\_\_ Position \_\_\_\_\_

## ROC 1100

**Model:** R110/120PCGB/A

**Cod:** MP01015115054

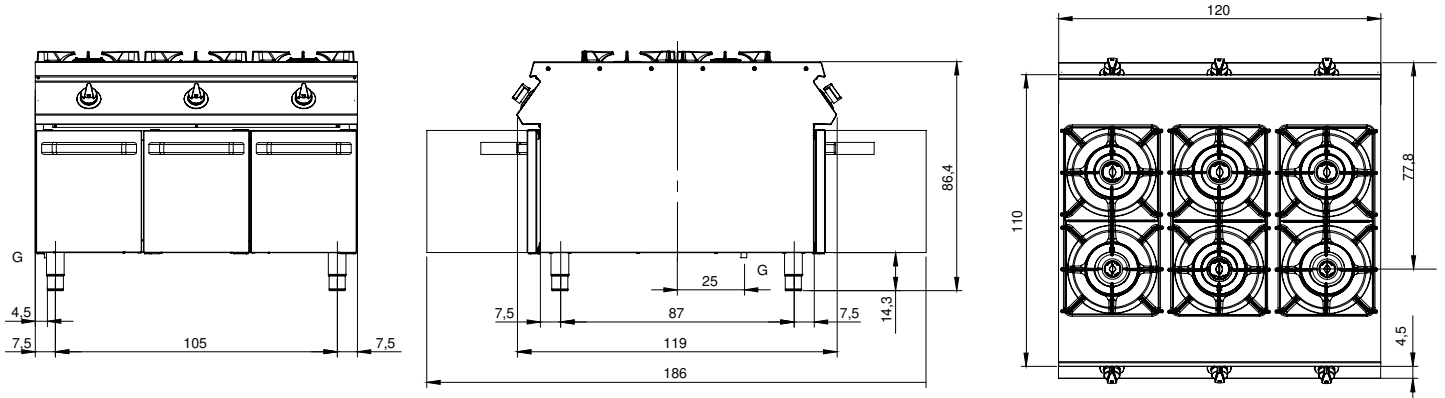
### Technical data

|                                  |                 |
|----------------------------------|-----------------|
| <b>Modularity:</b>               | On open cabinet |
| <b>Dimension (mm):</b>           | 1200x1100x870   |
| <b>Total gas power (Kcal/h):</b> | 33534           |
| <b>Total gas power (kW):</b>     | 39              |
| <b>Gas connection:</b>           | 1/2"            |
| <b>Net volume (m3):</b>          | 1,148           |
| <b>Packing dimensions (mm):</b>  | 1280x1272x1274  |
| <b>Burner power 1 (kW):</b>      | 5,5             |
| <b>Burner power 2 (kW):</b>      | 7,5             |
| <b>Burner power 3 (kW):</b>      | 7,5             |
| <b>Burner power 4 (kW):</b>      | 5,5             |
| <b>Burner power 5 (kW):</b>      | 5,5             |
| <b>Burner power 6 (kW):</b>      | 7,5             |
| <b>Gross volume (m3):</b>        | 2,074           |

### Features

|                     |  |
|---------------------|--|
| <b>Burners:</b>     | Single and double crown cast iron burners with brass burner cap                  |
| <b>Grill:</b>       | For single burner in cast iron or stainless steel (optional) dishwasher safe     |
| <b>Working top:</b> | Rrealizzato in acciaio inox AISI 304 spessore 2 mm con bacinelle in acciaio inox |
| <b>Knobs:</b>       | Made of aluminum with IPX5 water protection                                      |
| <b>Flue:</b>        | Made of AISI 304 stainless steel   |
| <b>Kit Gas:</b>     | Natural gas conversion kit 30/50 m/bar (tested with natural gas G20)             |

Technical draw



G: Gas connection 1/2"