



Client \_\_\_\_\_ Quantity \_\_\_\_\_  
 Project \_\_\_\_\_ Position \_\_\_\_\_

## ROC 1100

Model: R110/100TPE/P

Cod: MP01055125002

### Technical data

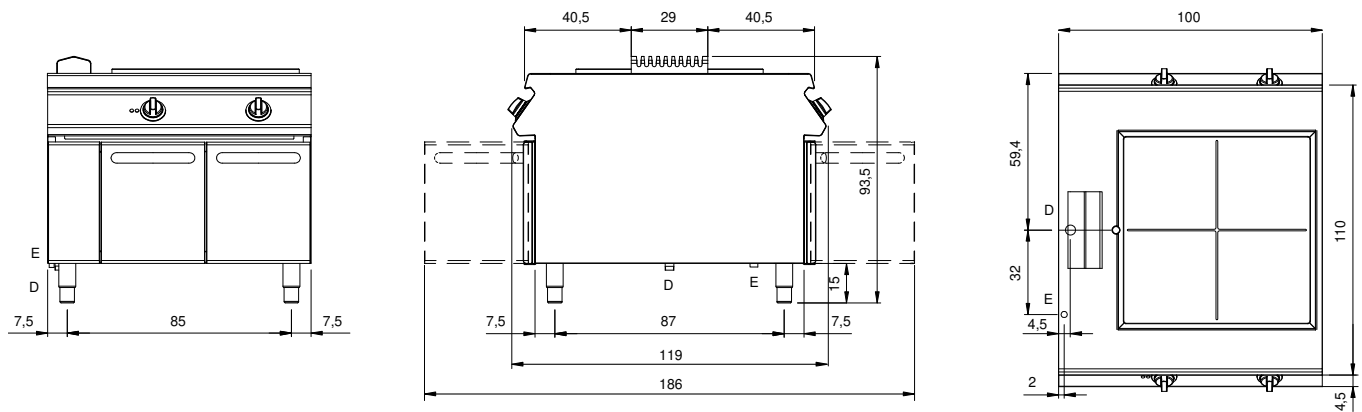
Modularity:	On cabinet with doors
Dimension (mm):	1000x1100x870
Total electric power (kW):	13,6
Electric power (V):	380-415
Ampere (A):	31
Phases:	3N
Cable section (mmq):	5G6
Frequency (Hz):	50-60
Drain size:	1"
Net volume (m3):	0,957
Packing dimensions (mm):	1280x1272x1274
Gross weight (kg):	172
Gross volume (m3):	2,074

### Features

Working top:	Made of AISI 304 stainless steel with a thickness of 2 mm
Knobs:	Made of aluminum with IPX5 water protection
Handles:	The brushed aluminum handles allow for a secure and sturdy grip with a ergonomic lines
Flue:	Made of AISI 304 stainless steel

Electric solid top with 4 zones, model on cabinet with doors. Side panels, bottom and back made of stainless steel. Top made of AISI 304 thickness 20/10 with control edge for liquid collection. Lateral flue made of stainless steel; designed for flush alignment. Cooking plate made with high thick steel 16M06. 4 independent cooking zones each with 3.4 kW power, marked with a satin cooking surface. Safety thermostat with automatic recovery. Lamp to indicate heating activation and proper working of the equipment. Special design knobs to avoid water penetration in the control panel on both sides. Base completely made of stainless steel. Doors with stainless steel tubular handle. Adjustable feet made of stainless steel. IPX4 protection rating. Electric power supply VAC 400 3N 50÷60 Hz - 13,6 kW.

**Technical draw**



E: Electric power