

Client \_\_\_\_\_ Quantity \_\_\_\_\_  
 Project \_\_\_\_\_ Position \_\_\_\_\_

## FUN 700

Model: F70/80IND/T

Cod: MP01132123002



### Technical data

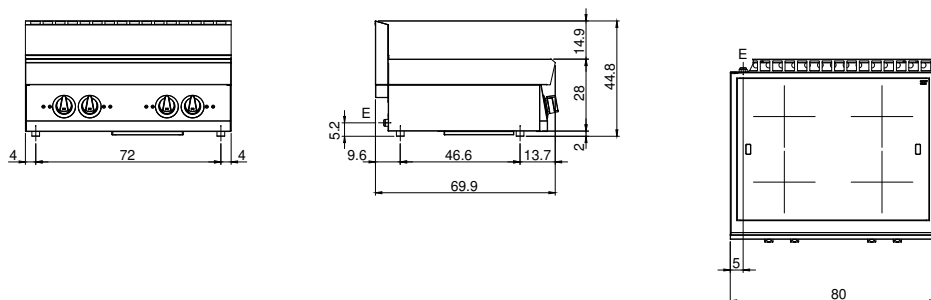
Modularity:	Top
Dimension (mm):	800x700x300
Total electric power (kW):	14
Electric power (V):	380-415
Ampere (A):	21,5
Phases:	3N
Cable section (mmq):	5G4
Frequency (Hz):	50-60
Net volume (m3):	0,17
Packing dimensions (mm):	880x856x509
Gross weight (kg):	40,5
Gross volume (m3):	0,383

### Features

Working top:	Made of AISI 304 stainless steel with a thickness of 10/10 mm
Knobs:	Knobs are made from a sturdy heat-resistant polymer blend and are equipped with liquid anti-leakage washer

Induction hob modele top. Made of extra thick pyroceram, hermetic, easily cleanable with cooking zones reproduced on it. 4 independent cooking zones controlled by power regulators, controlled by a knobs marked with the adjustment from minimum to maximum power. Set temperature is reached quickly for rapid cooking. The cooking zones are activated only upon direct contact with the pans. They are served by an overheating protection device. Inductive assemblies equipped with ventilation system for heat dissipation. Luminous indicator lights. Covering in AISI 304 stainless steel thickness 8/10; bottoms and internal parts in AISI 430 steel; internal reinforcements made of anti-corrosion material (aluminised sheet metal). - 4 cooking zones of 3,5 kW each. Total power 14 kW. Electrical power supply VAC 400 + 3N 50÷60 Hz.

## Technical draw



E: Electric power