

Client _____ Quantity _____
 Project _____ Position _____

FUN 650

Model: F65/40CPE/1V20/T

Cod: MP01212122000



Technical data

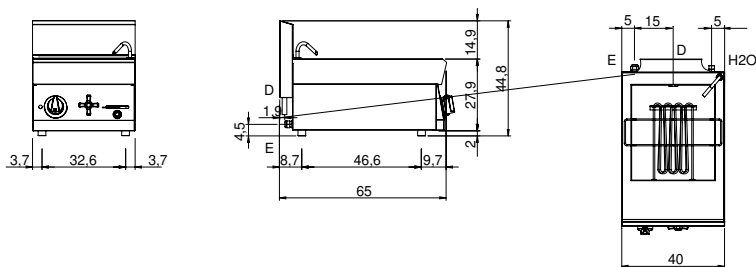
Modularity:	Top
Dimension (mm):	400x650x300
Total electric power (kW):	6
Nr. Wells:	1
Well litres 1:	20
Well dimensions 1 (mm):	326x374x190
Electric power (V):	380-415
Ampere (A):	14
Phases:	3N
Cable section (mmq):	5G2,5
Frequency (Hz):	50-60
Cold water inflow:	1/2"
Cold water pressure (bar):	Max pressure 5 bar
Drain size:	1"
Net volume (m3):	0,078
Packing dimensions (mm):	477x776x612
Gross weight (kg):	24
Gross volume (m3):	0,227

Features

Working top:	Made of AISI 304 stainless steel with a thickness of 10/10 mm
Knobs:	Knobs are made from a sturdy heat-resistant polymer blend and are equipped with liquid anti-leakage washer
Water inflow:	With tap

The top, the baskets and the basket support are made of AISI 304 stainless steel; the tub is made of AISI 316 stainless steel. Covering in AISI 304 stainless steel thickness 8/10; bottoms and internal parts in AISI 430 steel; internal reinforcements made of anti-corrosion material (aluminised sheet metal). Knob for water filling, cock and safety lever for draining, located on control panel. 4-position switch. Shielded heating elements located inside the tub. Indicator light to show electrical power supplied and heating elements in operation. Tub dimensions: 320x370x160h. - tub capacity 20 lt. - 2 heating elements x 3 kW - Total power 6 kW - Power supply voltage V AC 400+3N 50÷60 Hz.

Technical draw



E: Electric power

D: Drain for water

H2O: Water inflow 3/4"