

Client \_\_\_\_\_ Quantity \_\_\_\_\_  
 Project \_\_\_\_\_ Position \_\_\_\_\_

## FUN 650

Model: F65/40FRGV/1V8/T

Cod: MP01292112000



### Technical data

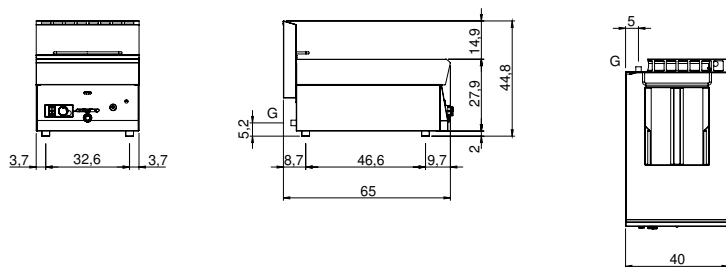
Modularity:	Top
Dimension (mm):	400x650x300
Total gas power (Kcal/h):	5847
Total gas power (kW):	6,8
Nr. Wells:	1
Well litres 1:	8
Well dimensions 1 (mm):	247x300x210
Gas connection:	1/2"
Net volume (m3):	0,078
Packing dimensions (mm):	477x776x612
Gross weight (kg):	27
Gross volume (m3):	0,227

### Features

Working top:	Made of AISI 304 stainless steel with a thickness of 10/10 mm
Type of heating:	Direct
Knobs:	Knobs are made from a sturdy heat-resistant polymer blend and are equipped with liquid anti-leakage washer
Heating:	Tilting heating elements for efficient cleaning
Kit Gas:	Natural gas conversion kit 30/50 m/bar (tested with natural gas G20)

Gas fryer, 1 vat capacity 8 lt. The top and the vat are made of entirely AISI 304 stainless steel; covering in AISI 430 stainless steel thickness 8/10; bottoms and internal parts in AISI 430 steel; internal reinforcements made of anti-corrosion material (aluminised sheet metal). Equipped with drain tap located on the control panel and elbow with safety insertion for removal of oil from tub. Oil heated by radiated horizontal flame burners in 18/10 stainless steel tubes immersed in the oil. Thermostatic safety valve with thermocouple, pilot burner and piezoelectric lighter for automatic burner ignition. Safety thermostat. 1 basket 26x23x11h. cm. with thermoplastic handle and 1 vat filter included. Tub capacity in lt. 8. Tub dimensions 280x300x230h. mm. Total power 6.3 kW

**Technical draw**



G: Gas connection 1/2"