

Client \_\_\_\_\_ Quantity \_\_\_\_\_  
 Project \_\_\_\_\_ Position \_\_\_\_\_

## FUN 650

Model: F65/40FRESE/1V10/T

Cod: MP01292122002



### Technical data

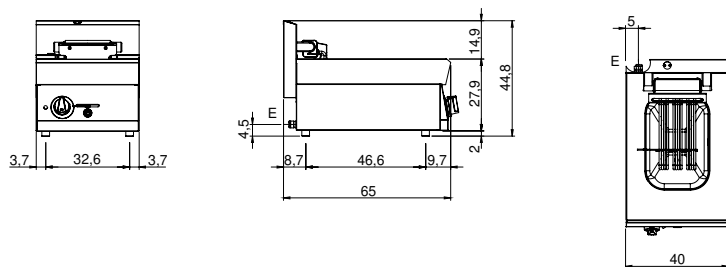
|                            |             |
|----------------------------|-------------|
| Modularity:                | Top         |
| Dimension (mm):            | 400x650x300 |
| Total electric power (kW): | 7,5         |
| Nr. Wells:                 | 1           |
| Well litres 1:             | 10          |
| Well dimensions 1 (mm):    | 244x364x169 |
| Electric power (V):        | 380-415     |
| Ampere (A):                | 11,5        |
| Phases:                    | 3N          |
| Cable section (mmq):       | 5G2,5       |
| Frequency (Hz):            | 50-60       |
| Net volume (m3):           | 0,078       |
| Packing dimensions (mm):   | 477x776x612 |
| Gross weight (kg):         | 22          |
| Gross volume (m3):         | 0,227       |

### Features

|                  |  |
|------------------|--|
| Working top:     | Made of AISI 304 stainless steel with a thickness of 10/10 mm  |
| Type of heating: | Direct   |
| Knobs:           | Knobs are made from a sturdy heat-resistant polymer blend and are equipped with liquid anti-leakage washer |
| Heating:         | Tilting heating elements for efficient cleaning  |

Electric fryer eco version 1 vat capacity 10 lt. The top and the vat are made entirely of 18/10 stainless steel. Equipped with ball cock located on control panel and safety insertion elbow for extracting oil from the vat. Pressed tub in 18/10 stainless steel with rounded corners. Heated by means of 3 shielded heating elements which can be tipped up for cleaning. Temperature controlled by thermostat from 100-180° C. Main switch. Safety thermostat. 1 basket 30x22x11h. cm. with thermoplastic handle and 1 vat filter included. Tub capacity in lt. 10. Tub dimensions 250x370x210h. mm. Indicator lights to show electrical power supplied and heating elements in operation. Total power 7.5 kW Electrical power supply V AC 400+3N 50÷60 Hz.

**Technical draw**



E: Electric power