

Client _____ Quantity _____
 Project _____ Position _____

FUN 600

Model: F60/30FTG/L/T
 Market: Extra UE

Cod: MP01372111000



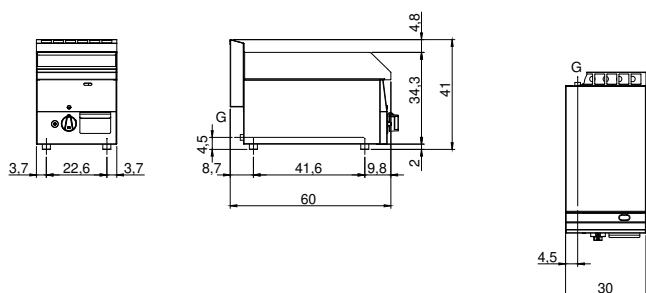
Technical data

Modularity:	Top
Dimension (mm):	300x600x300
Total gas power (Kcal/h):	4472
Total gas power (kW):	5,2
Cooking zone dimensions 1 (LxD mm):	296x470
Gas connection:	1/2"
Net volume (m3):	0,054
Packing dimensions (mm):	376x695x596
Gross weight (kg):	35
Gross volume (m3):	0,156

Features

Working top:	Realizzato in acciaio inox AISI 304 con spessore 8/10 mm
Material of plate:	Mild steel
Plate finish:	Smooth
Knobs:	Knobs are made from a sturdy heat-resistant polymer blend
Flue:	Made in a single piece, which facilitates the alignment of the modules
Liquid collection container:	Estraibile e lavabile in lavastoviglie
Plate:	In mild steel
Upright Splash guard:	On two sides
Kit Gas:	Natural gas conversion kit 30/50 m/bar (tested with natural gas G20)

Gas griddle with smooth plate Top with deep funnel in AISI 304 stainless steel; covering in AISI 430 stainless steel thickness 8/10; bottoms and internal parts in anti-corrosion material (aluminised sheet metal). Cooking hotplate in steel with high thermal conductivity for even temperature distribution. Provided with front groove, extractable drawer for grease collection and splash guard on three sides. Steel burner with pilot burner with piezoelectric ignition. Gas supplied by means of safety valve with thermocouple. 1 burner x 5.2 kW. - Total power 5.2 kW - Plate dimensions 295x470 mm.

Technical draw

G: Gas connection 1/2"