

Client \_\_\_\_\_ Quantity \_\_\_\_\_  
 Project \_\_\_\_\_ Position \_\_\_\_\_

## FUN 600

**Model:** F60/60FTG/L/T

**Cod:** MP01372111001

**Market:** Extra UE



### Technical data

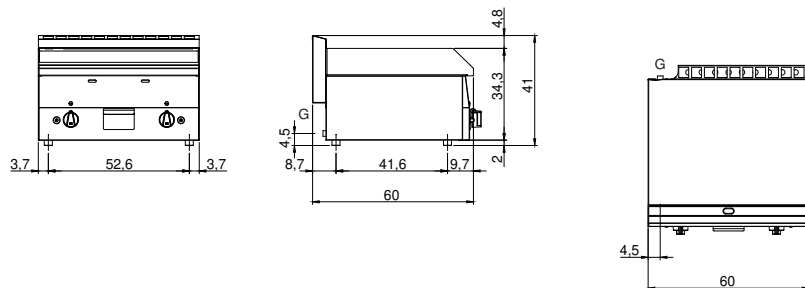
<b>Modularity:</b>	Top
<b>Dimension (mm):</b>	600x600x300
<b>Total gas power (Kcal/h):</b>	8943
<b>Total gas power (kW):</b>	10,4
<b>Cooking zone dimensions 1 (LxD mm):</b>	596x470
<b>Gas connection:</b>	1/2"
<b>Net volume (m3):</b>	0,108
<b>Packing dimensions (mm):</b>	676x695x630
<b>Gross weight (kg):</b>	51
<b>Gross volume (m3):</b>	0,296

### Features

<b>Working top:</b>	Made of AISI 304 stainless steel with a thickness of 8/10 mm
<b>Material of plate:</b>	Mild steel
<b>Plate finish:</b>	Smooth
<b>Knobs:</b>	Knobs are made from a sturdy heat-resistant polymer blend
<b>Flue:</b>	Made in a single piece, which facilitates the alignment of the modules
<b>Liquid collection container:</b>	Removable and dishwasher safe
<b>Plate:</b>	In mild steel
<b>Upright Splash guard:</b>	On two sides
<b>Kit Gas:</b>	Natural gas conversion kit 30/50 m/bar (tested with natural gas G20)

Gas griddle with smooth plate Top with deep funnel in AISI 304 stainless steel; covering in AISI 430 stainless steel thickness 8/10; bottoms and internal parts in anti-corrosion material (aluminised sheet metal). Cooking hotplate in steel with high thermal conductivity for even temperature distribution. Equipped with two independent cooking zones. Provided with front groove, extractable drawer for grease collection and splash guard on three sides. Steel burners with pilot burners with piezoelectric ignition. Gas supplied by means of safety valve with thermocouple. 2 burners x 5.2 kW/ea. - Total power 10.4 kW - Plate dimensions 595x470 mm.

### Technical draw



G: Gas connection 1/2"