

Client \_\_\_\_\_ Quantity \_\_\_\_\_  
 Project \_\_\_\_\_ Position \_\_\_\_\_

## FUN 600

Model: F60/30FTE/R/T  
 Market: Extra UE

Cod: MP01372121005



### Technical data

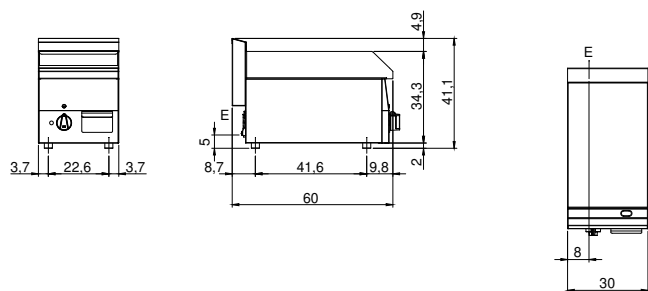
Modularity:	Top
Dimension (mm):	300x600x300
Total electric power (kW):	3
Cooking zone dimensions 1 (LxD mm):	296x470
Electric power (V):	380-415
Ampere (A):	5
Phases:	3N
Cable section (mmq):	5G1,5
Frequency (Hz):	50-60
Net volume (m3):	0,054
Packing dimensions (mm):	376x695x596
Gross weight (kg):	26
Gross volume (m3):	0,156

### Features

Working top:	Realizzato in acciaio inox AISI 304 con spessore 8/10 mm
Material of plate:	Mild steel
Plate finish:	Ribbed
Knobs:	Knobs are made from a sturdy heat-resistant polymer blend
Flue:	Made in a single piece, which facilitates the alignment of the modules
Liquid collection container:	Estraibile e lavabile in lavastoviglie
Plate:	In mild steel
Upright Splash guard:	On two sides

Electric griddle with grooved plate. Top with deep funnel in AISI 304 stainless steel; covering in AISI 430 stainless steel thickness 8/10; bottoms and internal parts in anti-corrosion material (aluminised sheet metal). Cooking hotplate in steel with high thermal conductivity for even temperature distribution. Provided with front groove, extractable drawer for grease collection and splash guard on three sides. The cooking zone is provided with 3 shielded heating elements (1 kW ea.) which are controlled by a thermostat with a range of use from 50° to 300° C - Equipped with safety thermostat and indicator light to show proper operation - Plate dimensions 295x470 mm - Total power 3 kW. Electrical power supply V AC 400+3N 50÷60 Hz.

**Technical draw**



E: Electric power