

Client \_\_\_\_\_ Quantity \_\_\_\_\_  
 Project \_\_\_\_\_ Position \_\_\_\_\_

## FUN 650

**Model:** F65/40GRGG/T

**Cod:** MP01412112000

**Market:** Extra UE



### Technical data

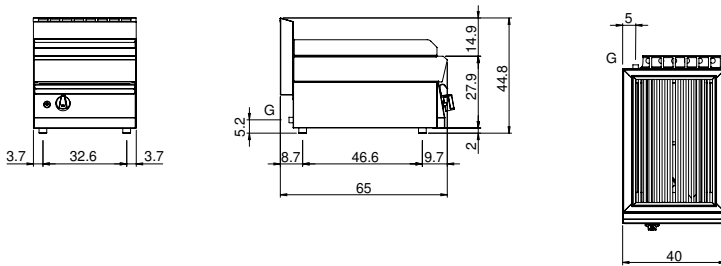
<b>Modularity:</b>	Top
<b>Dimension (mm):</b>	400x650x300
<b>Total gas power (Kcal/h):</b>	6449
<b>Total gas power (kW):</b>	7,5
<b>Cooking zone dimensions 1 (LxD mm):</b>	500x320
<b>Gas connection:</b>	1/2"
<b>Net volume (m3):</b>	0,078
<b>Packing dimensions (mm):</b>	477x776x612
<b>Gross weight (kg):</b>	34
<b>Gross volume (m3):</b>	0,227

### Features

<b>Grill:</b>	In cast iron
<b>Working top:</b>	Made of AISI 304 stainless steel with a thickness of 10/10 mm
<b>Knobs:</b>	Knobs are made from a sturdy heat-resistant polymer blend and are equipped with liquid anti-leakage washer
<b>Upright Splash guard:</b>	On two sides
<b>Kit Gas:</b>	Natural gas conversion kit 30/50 m/bar (tested with natural gas G20)

Griglia a gas Top. Piano in acciaio inox AISI 304 spessore 8/10; involucro in acciaio inox AISI 430 spessore 8/10; fondi e parti interne in acciaio AISI 430; rinforzi interni eseguiti in materiale anticorrosione (lamiera alluminata). Griglia con piano di cottura in ghisa. Bruciatore in acciaio inox (nr. 1x7,5 kW). Rubinetto gas valvolato in sicurezza con termocoppia e bruciatore pilota per l'accensione automatica del bruciatore. Accensione piezoelettrica del bruciatore. Bacinella raccogligrassi in acciaio inox. Potenza totale 7,5 kW.

### Technical draw



**G:** Gas connection 1/2"