

Client _____ Quantity _____
 Project _____ Position _____

FUN 650

Model: F65/70GRGG/T
 Market: Extra UE

Cod: MP01412112001



Technical data

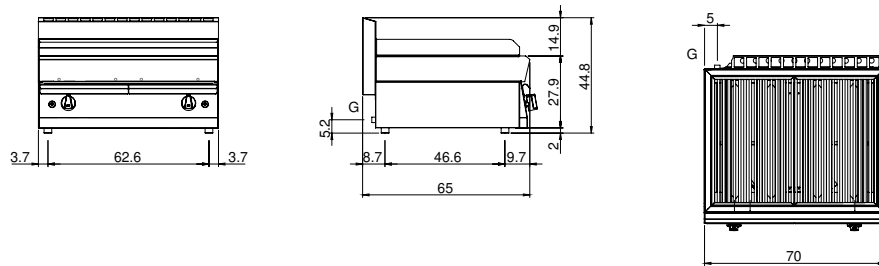
Modularity:	Top
Dimension (mm):	700x650x300
Total gas power (Kcal/h):	12898
Total gas power (kW):	15
Cooking zone dimensions 1 (LxD mm):	500x320
Cooking zone dimensions 2 (LxD mm):	500x320
Gas connection:	1/2"
Net volume (m3):	0,137
Packing dimensions (mm):	776x776x636
Gross weight (kg):	59
Gross volume (m3):	0,383

Features

Grill:	In cast iron
Working top:	Made of AISI 304 stainless steel with a thickness of 10/10 mm
Knobs:	Knobs are made from a sturdy heat-resistant polymer blend and are equipped with liquid anti-leakage washer
Upright Splash guard:	On two sides
Kit Gas:	Natural gas conversion kit 30/50 m/bar (tested with natural gas G20)

Griglia a gas Top. Piano in acciaio inox AISI 304 spessore 8/10; involucro in acciaio inox AISI 430 spessore 8/10; fondi e parti interne in acciaio AISI 430; rinforzi interni eseguiti in materiale anticorrosione (lamiera alluminata). Griglia con piano di cottura in ghisa, dotata di 2 zone di cottura indipendenti. Bruciatori in acciaio inox (nr. 2x7,5 kW). Rubinetti gas valvolati in sicurezza con termocoppia e bruciatori pilota per l'accensione automatica dei bruciatori. Accensione piezoelettrica dei bruciatori. Bacinella raccogligrassi in acciaio inox. Potenza totale 15 kW.

Technical draw



G: Gas connection 1/2"