

Client \_\_\_\_\_ Quantity \_\_\_\_\_  
 Project \_\_\_\_\_ Position \_\_\_\_\_

## FUN 600

Model: F60/60GRLG/T  
 Market: Extra UE

Cod: MP01452111000



### Technical data

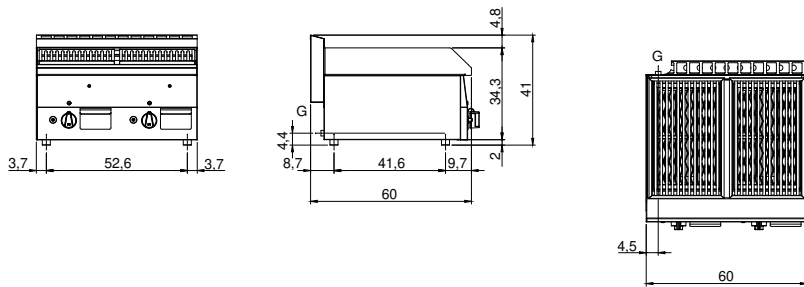
Modularity:	Top
Dimension (mm):	600x600x300
Total gas power (Kcal/h):	9459
Total gas power (kW):	11
Cooking zone dimensions 1 (LxD mm):	n°1 681.058.00 (270x mm)
Cooking zone dimensions 2 (LxD mm):	n°1 681.058.00 (270x mm)
Gas connection:	1/2"
Net volume (m3):	0,108
Packing dimensions (mm):	376x695x596
Gross weight (kg):	59,3
Gross volume (m3):	0,156

### Features

Grill:	In cast iron
Working top:	Realizzato in acciaio inox AISI 304 con spessore 8/10 mm
Knobs:	Knobs are made from a sturdy heat-resistant polymer blend
Flue:	Made in a single piece, which facilitates the alignment of the modules
Liquid collection container:	Estraibile e lavabile in lavastoviglie
Upright Splash guard:	On two sides
Kit Gas:	Natural gas conversion kit 30/50 m/bar (tested with natural gas G20)

Gas lava-stone grill. Top with deep funnel in AISI 304 stainless steel; covering in AISI 430 stainless steel thickness 8/10; bottoms and internal parts in anti-corrosion material (aluminised sheet metal). Grill with cast iron hob. Stainless steel pull-out drawer for collection of residual fats. 2 burner x 5.5 kW., in stainless steel with pilot burner with piezoelectric ignition. Gas supplied by means of safety valve with thermocouple. Total power 11 kW

### Technical draw



G: Gas connection 1/2"