

Client \_\_\_\_\_ Quantity \_\_\_\_\_

Project \_\_\_\_\_ Position \_\_\_\_\_

## FUN 650

**Model:** F65/40GRLI/T

**Cod:** MP01452112002



### Technical data

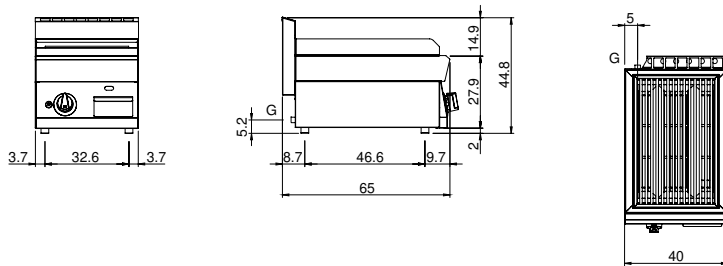
<b>Modularity:</b>	Top
<b>Dimension (mm):</b>	400x650x300
<b>Total gas power (Kcal/h):</b>	4730
<b>Total gas power (kW):</b>	5,5
<b>Cooking zone dimensions 1 (LxD mm):</b>	n°2 681.011.00 (160x
<b>Net volume (m3):</b>	0,078
<b>Packing dimensions (mm):</b>	477x776x612
<b>Gross weight (kg):</b>	45
<b>Gross volume (m3):</b>	0,227

### Features

<b>Grill:</b>	In stainless steel
<b>Working top:</b>	Made of AISI 304 stainless steel with a thickness of 10/10 mm
<b>Knobs:</b>	Knobs are made from a sturdy heat-resistant polymer blend and are equipped with liquid anti-leakage washer
<b>Liquid collection container:</b>	Removable and dishwasher safe
<b>Upright Splash guard:</b>	On two sides
<b>Kit Gas:</b>	Natural gas conversion kit 30/50 m/bar (tested with natural gas G20)

Gas Lava stone grill Top in AISI 304 stainless steel thickness 8/10; covering in AISI 430 stainless steel 8/10; bottoms and internal parts in AISI 430 steel; internal reinforcements made of anti-corrosion material. (aluminised sheet metal). Grill with stainless steel hob. Stainless steel pull-out drawer for collection of residual fats. 1 burner x 5.5 kW., in stainless steel with pilot burner with piezoelectric ignition. Gas supplied by means of safety valve with thermocouple. Total power 5.5 kW

### Technical draw



**G:** Gas connection 1/2"